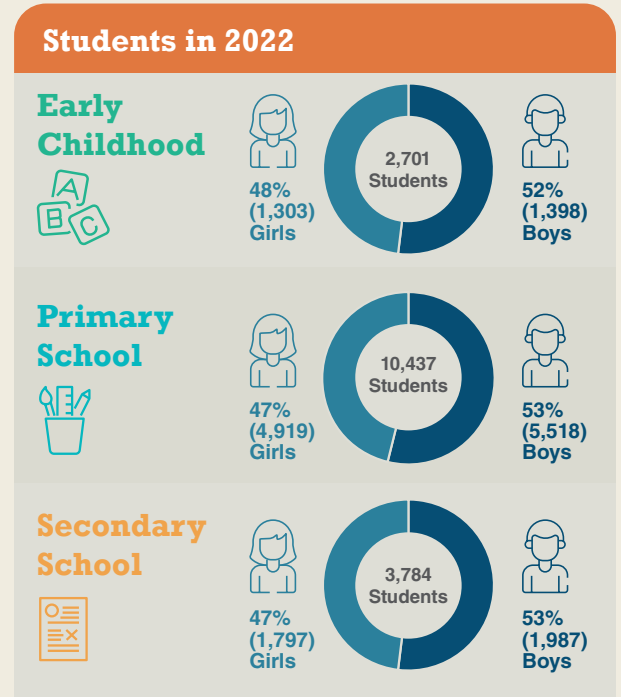
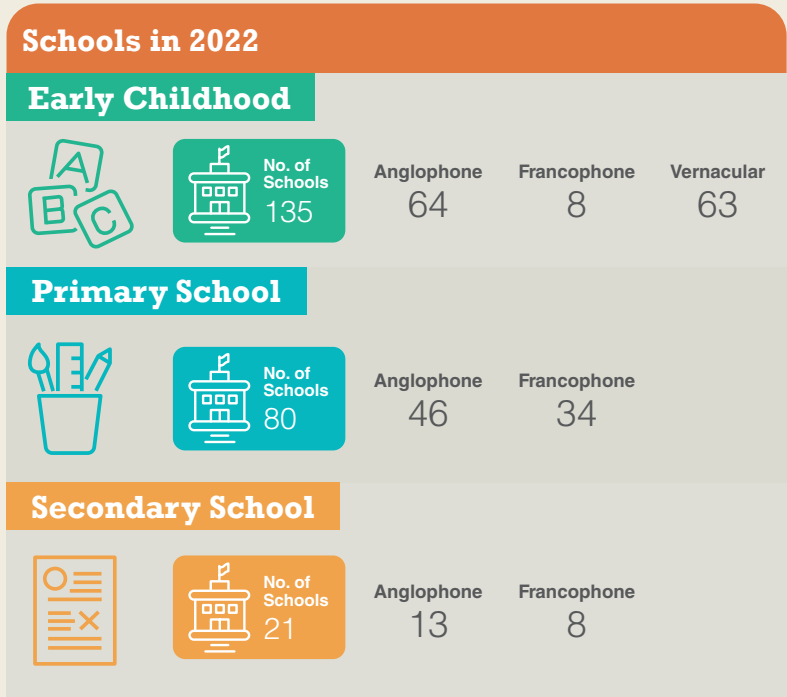




2022 Tafea Education Key Indicators

The Ministry of Education and Training Key Indicators are published every year. They help the ministry, provincial education offices, schools and development partners in their efforts to improve the sector.

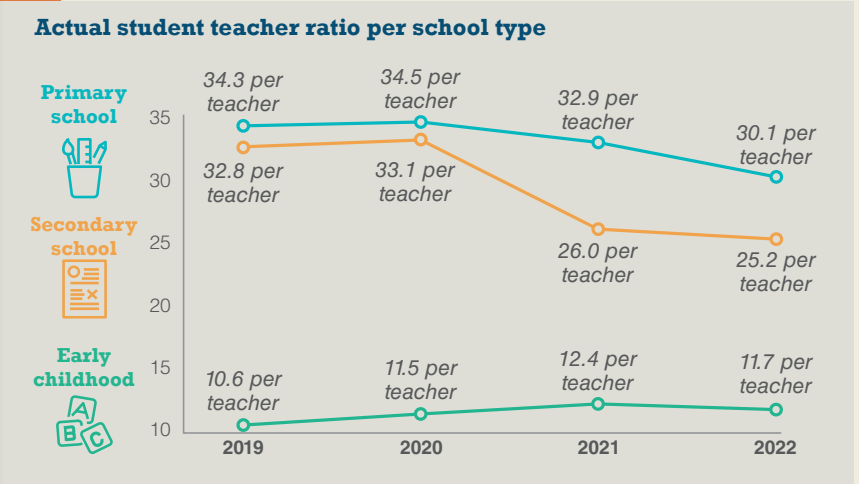


Student teacher ratio per school type

Ministry of Education and Training standard student teacher ratios are:

- 1 to 15*** in early childhood
- 1 to 30*** in primary schools
- 1 to 25*** in secondary schools

*The student teacher ratio in early childhood is prescribed by the Early Childhood Care & Education Policy of 2017. The student teacher ratios in primary and secondary schools ratios are prescribed by the Education Regulation Order No.44 of 2005.




Number of teachers per school type

♀ Female

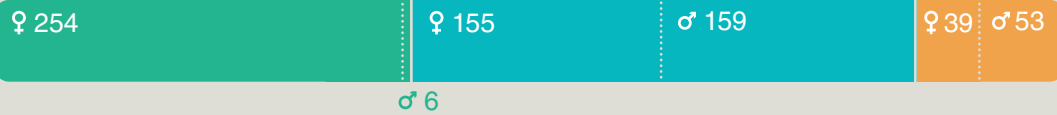
♂ Male

 Early Childhood

 Primary School

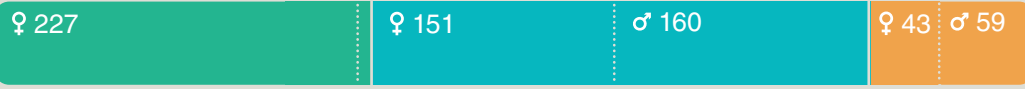
 Secondary School

2019



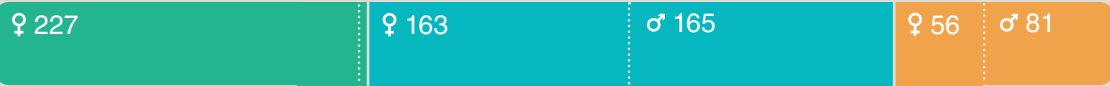
♂ 6

2020



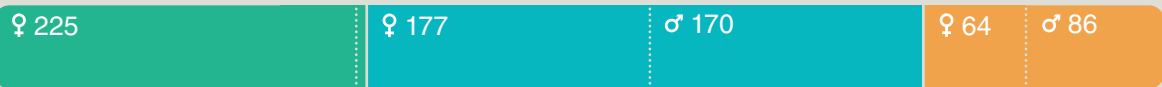
♂ 7

2021



♂ 5

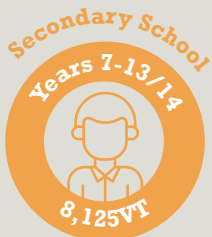
2022



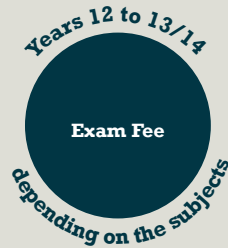
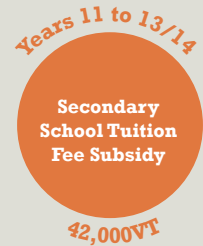
♂ 6

Annual grant in 2022 per student

Funded by the Government of Vanuatu



Funded by the Government of Vanuatu and supported by the Government of Australia



Ministry of Education & Training
Government of Vanuatu

Australian Aid 